



IGF 20
YEARS

INTERGOVERNMENTAL FORUM
on Mining, Minerals, Metals and
Sustainable Development



**2024
ANNUAL
REPORT**

© 2025 International Institute for Sustainable Development
Published by the International Institute for Sustainable Development
This publication is licensed under a [Creative Commons Attribution-NonCommercial-ShareAlike 4.0 International License](https://creativecommons.org/licenses/by-nc-sa/4.0/).

The International Institute for Sustainable Development (IISD) is an award-winning independent think tank working to accelerate solutions for a stable climate, sustainable resource management, and fair economies. Our work inspires better decisions and sparks meaningful action to help people and the planet thrive. We shine a light on what can be achieved when governments, businesses, non-profits, and communities come together. IISD's staff of more than 200 experts come from across the globe and from many disciplines. With offices in Winnipeg, Geneva, Ottawa, and Toronto, our work affects lives in nearly 100 countries.

IISD is a registered charitable organization in Canada and has 501(c)(3) status in the United States. IISD receives core operating support from the Province of Manitoba and project funding from governments inside and outside Canada, United Nations agencies, foundations, the private sector, and individuals.



The Intergovernmental Forum on Mining, Minerals, Metals and Sustainable Development (IGF) supports its more than 85 member countries in advancing their sustainable development goals through effective laws, policies, and regulations for the mining sector. We help governments take action to develop inclusive and gender-equitable practices, optimize financial benefits, support livelihoods, and safeguard the environment. Our work covers the full mining life cycle, from exploration to mine closure, and projects of all sizes, from artisanal mining to large-scale operations. Guided by our members' needs, we provide in-country assessments, capacity building, technical training, publications, and events to advance best practices, peer learning, and engagement with industry and civil society. The International Institute for Sustainable Development has hosted the IGF Secretariat since October 2015. Core funding is provided by the governments of Canada and the Netherlands.



IGF

INTERGOVERNMENTAL FORUM
on Mining, Minerals, Metals and
Sustainable Development

CONTENTS

| | |
|--|----|
| Introduction | 4 |
| 2024 Highlights | 6 |
| Our Members | 12 |
| 20th IGF Annual General Meeting | 14 |
| Mining Policy Framework | 20 |
| Financial Benefits | 22 |
| Building Capacity | 24 |
| Knowledge Products | 26 |
| Who We Are | 30 |
| 2024 Annual Report Activities Appendix | 32 |

Cover photo: Participants visiting a mine site in Tanzania during an IGF environmental management workshop for government officials in 2024.

Bringing Clarity to the Critical Minerals Policy Conversation

The forces driving demand for critical minerals were inescapable in 2024 as the world witnessed another year of record-high temperatures and the continued adoption of new technologies, while rising geopolitical tensions renewed the drive to secure mineral supply chains.

On the surface, there is broad awareness that this transformation is boosting demand for minerals. However, there remains a need to strengthen understanding among stakeholders—including policy-makers in resource-rich countries—to more effectively manage related risks and benefits. In 2024, a primary concern for the IGF Secretariat was to identify and inform key policy concerns around critical minerals.

We published a practical guide to help answer a fundamental question facing every nation: *What Makes Minerals and Metals “Critical”?* Additional IGF publications explored specific policy areas, including financial benefits, mineral pricing, and the often-overlooked role of artisanal and small-scale mining in critical mineral supply chains.

The Secretariat brought our members’ concerns to the UN Secretary-General’s Panel on Critical Energy Transition Minerals, which released principles and actionable recommendations to support a fair and just energy transition.

Critical minerals was a cross-cutting theme throughout the year's events, including regional conferences and our Annual General Meeting in Geneva.

At the same time, the Secretariat continued to respond to member requests for technical support and capacity building on mining governance challenges, including environmental management, gender equality, impact assessments, mine closure, financial benefits, and more.

The year marked the IGF's 20th anniversary and the expansion of our membership to 85 countries, following the addition of three new nations. On behalf of the IGF Secretariat and our membership, we warmly welcome new members Chile, Comoros, and Timor-Leste to the IGF community. We look forward to collaborating with you in the years ahead.

Sincerely,



Isabelle Ramdoo
IGF Director

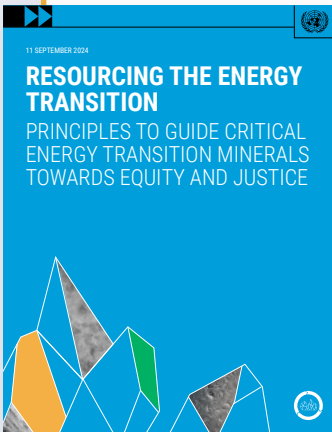


Mohato Moima
Executive
Committee Chair

2024 Highlights




IGF Membership Hits 85 Countries

In 2024, Chile, Comoros, and Timor-Leste joined the IGF to strengthen mining governance in their countries and contribute to our community. Read more on page 12.



UN Secretary-General’s Panel on Critical Energy Transition Minerals

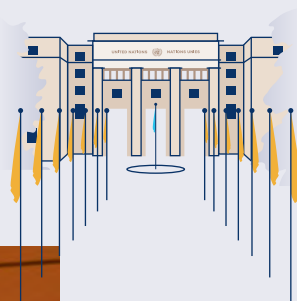
The IGF joined this high-level panel to help develop voluntary guiding principles covering the entire value chain and life cycle of critical energy transition minerals. The panel also put forward actionable recommendations to support their implementation.

| RENEWABLE ENERGIES | ELECTRIC VEHICLES | DIGITAL TECHNOLOGIES |
|---|---|---|
|  |  |  |
| HIGH POTENTIAL | | |
| Co Cobalt | Li Lithium (rock) | Co Cobalt |
| Cr Chromium | Nb Niobium | Li Lithium (rock) |
| Sn Tin | | |
| Nb Niobium | Pt Platinum | Pt Platinum |
| W Tungsten | W Tungsten | Sn Tin |
| Pt Platinum | Ta Tantalum | Ta Tantalum |
| Cu Copper | Sn Tin | Cu Copper |
| Zn Zinc | Cr Chromium | Zn Zinc |
| | Cu Copper | |
| | Zn Zinc | |
| MODERATE POTENTIAL | | |
| Ba Barite | Sb Antimony | Ba Barite |
| Ga Gallium | | Ga Gallium |
| Sb Antimony | | |
| ENERGY TRANSITION | | DIGITAL TRANSITION |

Artisanal and Small-Scale Mining of Critical Minerals

We dug deep into the often-overlooked role of artisanal and small-scale mining (ASM) in the energy and digital transitions. This vital research focuses on the potential to support livelihoods and economic development in local communities.

20th IGF Annual General Meeting



450+ participants

100 countries represented

3 days

18 sessions

83 speakers



In November, we welcomed over 450 participants to our 20th Annual General Meeting, which focused on the theme *Redefining Mining: Balancing the Need for Minerals with Protecting People and the Planet*. The event was hosted by UN Trade and Development (UNCTAD) at the Palais des Nations in Geneva. Read more on page 14.



More than **2,800 participants** from **100 nations** joined IGF events and workshops in 2024





Conference on the Future of Resource Taxation in Latin America and the Caribbean

In September, we partnered with the Inter-American Development Bank to host key government officials in Lima, Peru, alongside

regional actors from industry, civil society, academia, and international organizations. More than 150 delegates convened to advance effective taxation and fiscal policies to strengthen revenue administration, management, and distribution in the evolving mining sector. Read more on page 22.



Partnership With the United Nations Environment Programme

At the 20th AGM, we signed a 2-year agreement with the United Nations Environment Programme to help strengthen the environmental sustainability of minerals and metals management.





Express Course on Gender Equality and Mining Governance

In March, we launched a free online course for anyone seeking to build skills and knowledge to advocate for women in mining and affected communities. Throughout the year, 180 people completed the course, which outlines actions for governments, industry, and civil society to fight systemic exclusion, facilitate women's meaningful engagement in mining, and help eliminate gender-based violence in mining communities. The course was developed in partnership with the United Nations Development Programme and Swedish Environmental Protection Agency through the Environmental Governance Programme.



Renewed Collaboration With Germany

During the 20th IGF AGM, we renewed our agreement with Germany's Federal Ministry of Economic Cooperation and Development (BMZ) to collaborate on a variety of IGF member priorities, including gender equality and social inclusion, mine closure and rehabilitation, and local content and economic diversification.

Regional Engagement



Africa

At the African Mining Indaba conference in February, we participated in several sessions and co-hosted side events, alongside Global Affairs Canada and Germany's Federal Institute for Geosciences and Natural Resources, focusing on mineral supply risks to the energy transition and the gender-specific impacts of mine closures.

Americas

We welcomed more than 150 delegates to the Mining and Sustainability Forum of the Americas in Lima, Peru, centred on the theme Moving Beyond Extraction: Harnessing the Value of Critical Minerals. The event was co-organized with the Inter-American Development Bank and the Mines Ministries of the Americas Conference. In addition, we hosted a regional conference on resource taxation. Read more on page 22.



Asia

As part of our ongoing partnership with the Association of Southeast Asian Nations (ASEAN), the IGF participated in the 11th ASEAN Senior Officials Meeting in April. During the meeting, the IGF delivered a workshop for delegates on formalization in the ASM sector.



Partnerships

We partner with organizations and participate in high-level initiatives to advance mining governance at the global, regional, and national levels.

GLOBAL

| | |
|---|--------------------------------------|
| Consolidated Mining Standard Initiative | UN Trade and Development |
| Ford Foundation | United Nations Development Programme |
| Global Battery Alliance | United Nations Environment Programme |
| International Labour Organization | Women's Rights and Mining |
| International Women in Mining | World Bank |
| Organisation for Economic Co-operation and Development | World Economic Forum |
| Quadrature Climate Foundation | World Gold Council |
| UN Secretary-General's Panel on Critical Energy Transition Minerals | |

REGIONAL

| | |
|---|--|
| Africa MaVal | European Partnership for Responsible Minerals |
| African Development Bank | Inter-American Center of Tax Administrations |
| African Legal Support Facility | Inter-American Development Bank |
| African Tax Administration Forum | Mines Ministries of the Americas Conference |
| Asian Development Bank | United Nations Economic Commission for Latin America and the Caribbean |
| Asia-Pacific Economic Cooperation | West African Economic and Monetary Union |
| ASEAN | |
| Association of Women in Mining of West Africa | |
| Economic Community of Central African States | |

NATIONAL

| | |
|---------------------------|--|
| Government of Canada | Government of the Netherlands |
| Government of France | Government of the United Kingdom |
| Government of Germany | Government of the United States |
| Government of Norway | Prospectors and Developers Association of Canada |
| Government of Sweden | |
| Government of Switzerland | |

Our Members


Welcome, Chile, Comoros, and Timor-Leste

With the addition of three new countries in 2024, IGF membership grew to 85 nations. The diversity of these new members underlines the importance of mining governance around the world. Chile is a top mining jurisdiction and a key player in the energy transition, as both a producer and consumer of minerals. Comoros and Timor-Leste are smaller countries, where non-metallic mining is key. In joining the IGF, these three nations are aligned in taking action to ensure mining contributes to sustainable development.

Chile

As a leading mining country, joining the IGF is a natural step that we are taking to share our knowledge and contribute to the necessary transformations that support the global transition toward sustainable, productive development. //

AURORA WILLIAMS BAUSSA
Minister of Mining, Chile

- 
- Member countries
 - New member in 2024

See page 31 for a complete list of IGF member countries.



Comoros

Through the IGF, we hope to improve how we govern this sector to ensure positive social and environmental outcomes. //

MOHAMED CHAHEIRE MOHAMED CHAMASSI

Head of the Comoros Geological Bureau

Timor-Leste

We hope to draw on the IGF's expertise to learn more about mining opportunities related to the energy transition and best practices for regulating the sector. //

RAFAEL DANILSON MAGNO DE ARAÚJO

President of the National Mining Authority, Timor-Leste

20th IGF Annual General Meeting

Redefining Mining

Balancing the Need for Minerals with Protecting People and the Planet

The 20th IGF Annual General Meeting (AGM) focused on how governments and other stakeholders can ensure that the increased global demand for minerals supports positive social and environmental outcomes.

The event, hosted by UNCTAD, included 18 sessions over 3 days in November at the Palais des Nations in Geneva, Switzerland. These sessions were led by experts and policy-makers in mining governance, covering the entire mining life cycle and extending beyond extraction within the mineral value chain.

The AGM attracted more than 450 delegates from 100 nations, including officials from IGF member countries and representatives from industry, civil society, non-governmental, and international organizations.





IGF Government Forum

Following the AGM, more than 100 policy-makers convened for the IGF Government Forum, a 1-day workshop in Geneva. Through this interactive forum, the Secretariat engaged with officials to learn about their priorities and explore opportunities for collaboration. It also provided a more intimate setting for mining policy-makers from across the globe to engage in valuable peer learning and share their experiences.



IGF 20
YEARS

INTERGOVERNMENTAL FORUM
on Mining, Minerals, Metals and
Sustainable Development

At the World Summit on Sustainable Development in September 2002, resource-rich countries decided to raise awareness about the mining sector's importance for social and economic development by collaborating on paragraph 46 of the Johannesburg Plan of Implementation, which outlined key priorities for mining stakeholders.



2002

IGF Turns 20!

At the 2010 AGM, IGF members ratified the cornerstone Mining Policy Framework (MPF), a compendium of best practices to support good governance in mining. The MPF outlines the scope of the IGF's mandate and serves as the basis for the Secretariat's assessment and implementation work with member countries.

2010

The six pillars of the MPF:

-  **Laws, Policies, and Institutions**
-  **Financial Benefits**
-  **Socio-Economic Benefits**
-  **Environmental Management**
-  **Post-Mining Transition**
-  **Artisanal and Small-Scale Mining**



IGF

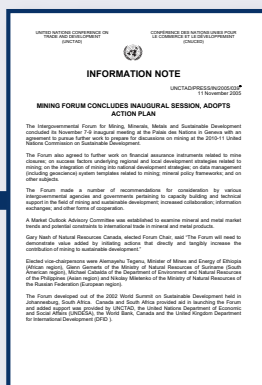
INTERGOVERNMENTAL FORUM
on Mining, Minerals, Metals and
Sustainable Development



**INTERGOVERNMENTAL FORUM
ON MINING, MINERALS, METALS
AND SUSTAINABLE DEVELOPMENT**

Acknowledging the need for a global forum to advance the priorities outlined in Johannesburg, Canada and South Africa spearheaded a UN Type II partnership—the Global Dialogue on Mining, Minerals, Metals and Sustainable Development. Soon after, participants decided that a more formal, member-driven forum for resource-rich countries was needed.

2003-2004



The IGF was launched in February 2005, with 25 founding member countries and the Government of Canada serving as the founding host of the Secretariat. The inaugural IGF AGM was held later in 2005 at the Palais des Nations in Geneva, hosted by UNCTAD.

2005



The IGF completed the first MPF assessment for the Dominican Republic.

2014



IISD

Canada

By 2015, the IGF's membership had nearly doubled since its formation, reaching 47 nations. That same year, the Secretariat's administration was transferred to the International Institute for Sustainable Development, with core funding from the Government of Canada.

2015

The Secretariat published its first Guidance for Governments on Managing Artisanal and Small-Scale Mining.

2017



The Secretariat completed its 15th MPF assessment for Mexico.

2022

Following a multistakeholder process to explore the evolving needs of resource-rich countries, IGF members ratified an updated MPF in November 2023.

2023





Kingdom of the Netherlands

Kingdom of the Netherlands became a core funder of the Secretariat, which allowed the IGF to broaden its work and allocate more resources to support its members.

2021

IGF on the World Stage

Through our years of work building government capacity and providing technical support at the national level, the IGF has evolved to be uniquely positioned to amplify the voices of resource-rich countries on the world stage. With encouragement from our members, the Secretariat is increasingly engaged in key international forums, initiatives, and partnerships (see page 11) that are shaping the global mining governance landscape.



IGF hosted its 20th AGM in Geneva.

2024



Supporting Bhutan to Strengthen Mining Governance



The Government of Bhutan identified the mining sector as one of the five jewels of the economy, highlighting its potential to significantly drive the country's economic development. The government requested an IGF MPF assessment to evaluate the degree to which the standards of the MPF are integrated into existing national laws and policies.

In early 2024, the assessment began with desk-based research, which included a detailed review of Bhutan's mining laws, policies, and regulations. In April, the IGF assessment team visited Bhutan to meet with key mining stakeholders, including government officials responsible for mining, environment, labour, industry, and water. The team also engaged with industry groups, non-governmental organizations, universities, and visited mine sites to get a close-up look of operations.

"Stakeholders expressed a clear commitment to strengthen governance in Bhutan to ensure the mining sector develops responsibly and in service of sustainable development," said Carlos Ortega, Environmental Advisor and member of the IGF assessment team.

Next, the Secretariat developed an assessment report that identified policy strengths, gaps, and recommendations for

the government. In September, the IGF returned to Bhutan to deliver a week-long workshop for government officials, which presented the assessment findings and delivered capacity-building sessions on community engagement, fiscal policy, non-metallic mining regulations, mine closure, and post-mining transition.

"The Government of Bhutan was a great partner throughout this process. They encouraged key officials to participate, which aided the assessment and paves the way for implementation," Ortega said.

Bhutan is the 18th IGF member to receive an MPF assessment, and the first to be assessed under the updated MPF, which was ratified by members in late 2023.



Conference on the Future of Resource Taxation in Latin America and the Caribbean





Countries in Latin America and the Caribbean are well-positioned to benefit from the rising demand for critical minerals as the world transitions away from fossil fuels. In 2024, the IGF, through its Global Mining Tax Initiative, partnered with the Inter-American Development Bank to host a conference for regional governments. The event focused on improving fiscal policies and forming partnerships to ensure that mineral wealth drives economic growth, boosts public revenue, and supports sustainable development across the region.

The Conference on the Future of Resource Taxation in Latin America and the Caribbean provided a unique opportunity to convene key government officials from finance, mining, and revenue authorities, along with representatives from industry, civil society, academia,

and international organizations that are active in the region.

The event was held from September 30 to October 2 in Lima, Peru, and explored effective taxation and fiscal policies to strengthen revenue administration, management, and distribution practices for the evolving mining sector amid the global energy transition. Additionally, the program discussed social and environmental challenges and international cooperation.

During the event, participants heard from expert speakers and engaged in discussions on topics such as financial benefits sharing, mineral pricing, contract negotiations, revenue distribution and management, as well as the environmental and social impacts of mining.

Building Capacity

Direct Engagement to Close Governance Gaps





Building government capacity is a key component of our work with IGF member countries. In 2024, specialists from the Secretariat responded to requests to support stronger mining governance in resource-rich countries across the globe. In total, we delivered 24 capacity-building programs that reached more than 1,200 participants in 100 countries.



for Cameroon, Honduras, Nigeria, and ASEAN member countries this year.

We saw increased interest from resource-rich countries on issues related to mine closure and post-mining transition. Throughout the year, we delivered capacity-building programs on this topic for Burkina Faso, Jamaica, Namibia, Senegal, Tanzania, and Thailand, and a regional workshop for members of ASEAN and the West African Economic and Monetary Union.

As many of our members face challenges related to ASM, we delivered ASM-focused programs

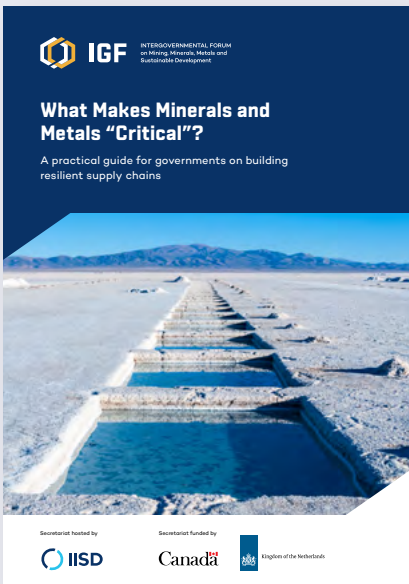
The IGF's Global Mining Tax Initiative delivered its training program on International Taxation and the Extractives Sector to more than 500 virtual participants from tax, finance, and mining authorities in 96 countries. The Initiative also launched a new deep-dive support program for Zimbabwe and continued its work with Ecuador, Guinea, Papua New Guinea, Peru, and Senegal to build capacity in areas such as mineral valuation, tax treaties, and transfer pricing.

Knowledge Products

New Resources Focused on Pressing Policy Concerns

In 2024, we released 15 publications covering a wide range of mining governance issues in resource-rich countries.

Amid increasing adoption of low-carbon energy and new digital technologies, we developed a suite of new resources to help policy-makers navigate the evolving critical minerals landscape.



What Makes Minerals and Metals

“Critical”? details how resource-rich countries can design strategic policies and roadmaps for their mining products and broader industrial supply chains.



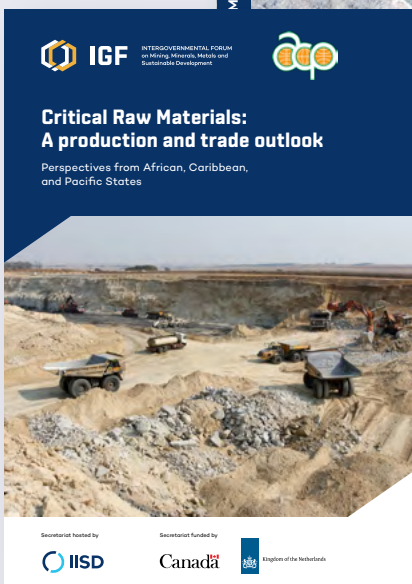
Financial Benefit-Sharing Issues for Critical Minerals focuses on key revenue concerns for countries that host critical minerals.



Artisanal and Small-Scale Mining of Critical Minerals explores the often-overlooked potential of the ASM sector to play a larger role in meeting the demand for critical minerals.



Determining the Price of Minerals: A Transfer Pricing Framework for Lithium helps governments correctly price lithium products for the purposes of revenue collection.



Critical Raw Materials: A Production and Trade Outlook focuses on how member countries of the Organisation of the African, Caribbean, and Pacific States can address challenges and leverage opportunities amid changing global market dynamics.

We also released two publications on [Decarbonization of the Mining Sector](#), which explore the role of mining in nationally determined contributions under the Paris Agreement. The scoping study provides an in-depth analysis of the status of mining, as well as challenges and opportunities to curb greenhouse gas emissions. We also published complementary [case studies](#) that examine decarbonization in Chile, Indonesia, and South Africa.



As many resource-rich countries seek to address environmental and social concerns in their ASM sectors, we produced research on [ASGM Tailings Management and Reprocessing Governance](#). This report analyzes existing frameworks and provides recommendations to improve awareness, education, safety, and regulation related to tailings. [Modernizing Artisanal and Small-Scale Mining: Harnessing New Technologies for Sustainable Development](#) examines benefits, opportunities, and policy options related to newly developed technologies in the ASM sector.



Our report on *Strategic Environmental Assessment for the Mining Sector* provides analysis and case studies that demonstrate how these assessments can improve mining sector governance by integrating environmental considerations into policies, plans, and programs, while also evaluating the connections between economic and social considerations.

Leveraging Digital Infrastructure for Mining Community Resilience raises important questions about the potential to harness the mining industry to deploy digital technologies and how these may have wider socio-economic impacts. *Leveraging Technologies for Gender Equality in Mining Communities* looks at successful cases of technology sharing in the Democratic Republic of the Congo, South Africa, and Peru.



Navigating Global Sustainability Standards in the Mining Sector provides an updated overview of the current landscape of responsible mining standards and voluntary sustainability initiatives.

WHO WE ARE

Executive Committee



Mohato Moima,
Chair
Lesotho



Anna Apler
Sweden



Silvana de
Olazaval Carty
Peru



Abdelaâli Lefdaoui
Morocco



Kridtaya
Sakamornsnguan
Thailand



Scott Ticknor
United States

IGF Members

Americas

Argentina
Bolivia
Brazil
Canada
Chile
Colombia
Costa Rica
Dominican Republic
Ecuador
El Salvador
Guatemala
Guyana
Honduras
Jamaica
Mexico
Panama
Paraguay
Peru
Suriname
United States of America
Uruguay

Africa

Botswana
Burkina Faso
Burundi
Cameroon
Chad
Comoros
Egypt
Eswatini
Ethiopia
Gabon
Ghana
Guinea
Guinea Bissau
Kenya
Lesotho
Liberia
Madagascar
Malawi
Mali
Mauritania
Morocco
Mozambique
Namibia

Niger

Nigeria
Republic of the Congo
Rwanda
Senegal
Sierra Leone
Somalia
South Africa
South Sudan
Sudan
Tanzania
Togo
Uganda
Zambia
Zimbabwe

Eurasia

Afghanistan
Armenia
Bhutan
Cambodia
France
Georgia

Germany

India
Iran
Ireland
Kazakhstan
Kyrgyz Republic
Laos
Mongolia
Myanmar
Netherlands
Philippines
Romania
Russian Federation
Saudi Arabia
Sweden
Thailand
Timor-Leste
United Kingdom

Oceania

Fiji
Papua New Guinea

2024 Annual Report

Activities Appendix

Selected IGF activities in 2024, including IGF-led or co-led conferences, forums, webinars, and workshops, which engaged more than 2,800 participants in 100 nations.

Closing Mines, Opening Futures: Fostering gender equality and achieving relinquishment

January 25

This webinar explored how governments can ensure that gender considerations are integrated into mine closure along with policy steps toward successful mine site relinquishment.

Managing Mineral Supply Risks for the Energy Transition

February 7

This event focused on raising awareness and understanding of how supply risks for commodities like copper, nickel, lithium, cobalt, and rare earth elements may affect prices and impede climate goals. It was a side event during the African Mining Indaba conference co-organized with Global Affairs Canada.

Navigating Change: Gendered impacts of mine closure

February 7

This event explored the interconnectedness of gender equality and mine closure, a topic often given insufficient consideration, and the subject of a recent IGF report. It was a side event during the African Mining Indaba conference co-organized with Germany's Federal Institute for Geosciences and Natural Resources.

Improving Mining Governance With Strategic Environmental Assessments

February 13

This webinar for IGF members examined an essential tool for policy-makers seeking to develop a sector-wide vision for responsible mining:

strategic environmental assessment. The event was co-organized with the Netherlands Commission for Environmental Assessment.

Diagnostic and Training on Environmental Management and Mine Closure in Tanzania

February 19–23

This workshop covered key aspects of environmental management and mine closure. Participants had the opportunity to use the IGF's Environmental Management Progress Assessment tool to diagnose the state of play for environmental management in Tanzania. Participants also visited a gold mine to see how various practices described during the workshop are being applied.

Prosperity Unearthed: Building trust through benefit sharing

March 3

This event explored how benefit sharing can build trust between stakeholders to support the mining sector's growth. It included keynote speakers from government, industry, and civil society representatives and presented instructive case studies. This side event during the Prospectors and Developers Association of Canada conference was co-organized with the Extractive Industries Transparency Initiative and the German Corporation for International Cooperation.

International Mines Ministers Summit

March 4

This annual event, held during the Prospectors and Developers Association of Canada conference, included high-level representatives from government, industry, and civil society. The summit focused on the theme of Striking a Balance for Success: Responsible Mining and the Energy Transition. It was co-organized by the Prospectors and Developers Association of Canada and the World Economic Forum.

Mine Closure and Post-Mining Transition Capacity Building for the Association of Southeast Asian Nations (ASEAN)

March 18–19

Presented an overview of mine closure from pre-mining to relinquishment through presentations, case studies, and group exercises. The event included discussions on leading mine closure policies and practices,

including closure plans, cost estimation, financial assurance, social closure, biodiversity, and relinquishment.

Workshop on Tax and Extractives for Papua New Guinea

March 20–21

The IGF partnered with the Organisation for Economic Co-operation and Development (OECD) for this week-long engagement to support Papua New Guinea in addressing tax base erosion and profit shifting in the mining sector. The workshop covered several topics, including the fiscal aspects of model mining development agreements.

West Africa Regional Training on Estimating Mine Closure and Rehabilitation Costs

April 22–25

This regional workshop for administrative officials in West Africa aimed to enhance their capacity to estimate mine closure and rehabilitation costs. The event was organized in partnership with the West African Economic and Monetary Union.

Gender in Artisanal and Small-Scale Mining Training Workshop for Nigeria

April 22–26

This capacity-building workshop for Nigerian government officials focused how to assess and address mining's impacts on women and local communities. The program was informed by a needs assessment and incorporated relevant case studies to provide tangible contexts for exploring the key issues.

Report Launch: Strategic Environmental Assessment for the Mining Sector

April 25

The IGF partnered with the Netherlands Commission for Environmental Assessment to launch their joint report, Strategic Environmental Assessment for the Mining Sector. The session took place during the 43rd Annual Conference of the International Association for Impact Assessment in Dublin, Ireland.

Workshop on Formalization of Artisanal and Small-Scale Mining (ASM)

April 29

IGF–ASEAN workshop focused on formalization to improve environmental, health and safety, and socio-economic outcomes in the ASM sector. This workshop supported ASEAN countries' goals to better integrate ASM into the wider economy to promote sustainable mining development in the region.

Training on Mineral Pricing for Guinea

May 7

This training session for officials covered the design of the bauxite reference price to support revenue collection in the mining sector.

Global Trends in Artisanal and Small-Scale Gold Mining Tailings Management and Reprocessing Governance

May 16

This webinar presented an IGF report designed to inform policy-makers about artisanal and small-scale gold mining extraction, processing, tailings generation, management, and reprocessing. It also covered mercury recovery, management, and disposal.

Environmental Management and Mine Closure in Jamaica's Mining Sector

May 27–31

This training workshop covered key environmental management issues related to water, waste, and air and noise management. The mine closure modules focused on planning, post-mining land uses, risk analysis, cost estimating, and financial assurance. As part of the program, participants visited mine sites in the country, including bauxite mines and limestone quarries.

Global Mining Tax Initiative Deep-Dive Mission to Zimbabwe

May 27–31

During this week-long engagement, the IGF provided training sessions for officials in Zimbabwe on mining fiscal regime design, transfer pricing, mineral valuation, and adapting to the global minimum tax.

Training on Mine Closure and Rehabilitation in Senegal

May 28–29

This workshop included sessions designed to equip officials with the knowledge and skills to effectively plan and implement mine closure and rehabilitation, emphasizing early planning, community engagement, environmental and chemical stability, and financial assurance.

Workshop on Fiscal and Non-Fiscal Stabilization for Ecuador

May 28–30

In partnership with the OECD, we held a 3-day workshop on fiscal and non-fiscal stabilization, which covered the fundamentals of stabilization, the evolution of legal frameworks, and approaches to address governance challenges.

Legal Frameworks for Non-Metallic Mining

May 30 and April 17

These sessions allowed for consultation and discussion with IGF members about the best practices for legal frameworks for non-metallic mining.

International Taxation and the Extractives Sector

June–October 2024

This nine-module training program was delivered virtually to more than 500 participants across the globe, in partnership with the OECD, African Tax Administration Program, Asian Development Bank, and Inter-American Center of Tax Administrations.

Global Mining Tax Initiative Deep-Dive Mission to Tanzania

June 3–7

During this week-long engagement, the IGF provided training sessions for officials in Zimbabwe on mining fiscal regime design, mineral valuation, and financial modelling.

Workshop on Tax Treaties and Mining for Peru

June 10–12

This 3-day workshop was delivered alongside the OECD to build capacity on tax treaty practices with officials in Peru.

Global Mining Tax Initiative Deep-Dive Mission to Guinea

July 8–12

This training focused on the implementation of a bauxite reference price in Guinea and included officials from various interested government ministries and agencies.

Workshop on Copper Pricing and Transfer Pricing for Peru

July 29–Aug 2

IGF–OECD workshop for government officials to build capacity on copper pricing and transfer pricing practices in Peru’s mining sector.

Artisanal and Small-Scale Mining and Gender Equality in Honduras

July 30–Aug 1

This workshop was designed to provide a strong foundation on the key gender dimensions of ASM to support the work of officials. It included interactive learning modules and illustrative case studies from peer countries.

Environmental Management in Artisanal and Small-Scale Mining Training in Cameroon

August 19–22

This training program aimed to impart techniques for environmental management, rehabilitation methods, and mercury-free and cyanide-free mining, and share demonstrative studies from similar contexts. The program included visiting a mine site where participants observed artisanal mining operations firsthand.

Environmental Management for Non-Metallic Mining

September 10 and October 18

These sessions allowed for consultation and discussion with IGF members about the best practices for environmental management for non-metallic mining.

2024 Mining and Sustainability Forum of the Americas

September 12

This annual event was held in Lima on the theme of Moving Beyond Extraction: Harnessing the Value of Critical Minerals and was attended by more than 150 participants. The event was hosted by the IGF, Inter-American Development Bank, and the Mines Ministries of the Americas Conference.

Mining Policy Framework Implementation Workshop in Bhutan

September 16–20

This workshop for government officials presented the findings of the assessment and delivered capacity-building sessions on community engagement, fiscal policy, non-metallic mining regulations, mine closure, and post-mining transition.

Conference on the Future of Resource Taxation in Latin America and the Caribbean

September 30–October 2

This conference in Lima, Peru, provided a unique opportunity to gather key government officials from revenue authorities and ministries of finance and mining, together with representatives from industry, civil society, academia, and international organizations. This event explored effective taxation and fiscal policies to strengthen revenue administration, management, and distribution practices for the evolving mining sector. This event was co-organized with the Inter-American Development Bank.

Mining Impact Assessment Training in Zimbabwe

October 15–18

This workshop in Harare focused on environmental and social impact assessments (ESIA) in the mining sector. The primary objectives were to analyze Zimbabwe's ESIA legal and institutional framework using the IGF's Mining ESIA Tool, promote interministerial dialogue on ESIA, and identify key priorities for enhancing governance in the country.

What Makes Minerals and Metals “Critical”? Financial Benefits and Other Key Considerations for Governments

October 23

This webinar presented IGF guidance to help governments understand the concept of criticality and take stock of related opportunities and risks to inform strategic decision making. The IGF also shared highlights from its in-depth research for countries seeking to optimize financial benefits from critical minerals.

Mine Closure and Abandoned Mines Training Workshop for Namibia

October 28–November 1

The workshop covered key mine closure principles and plans, the technical and social aspects of closure, and approaches for cost estimation and funding closure. Participants also explored challenges and opportunities related to abandoned mines and discussed local and international case studies.

IGF 20th Annual General Meeting

November 18–20

The 20th IGF Annual General Meeting was held at the Palais des Nations in Geneva, hosted by UN Trade and Development, with the theme Redefining Mining: Balancing the Need for Minerals with Protecting People and the Planet. More than 450 delegates attended the event in person, with more following online. The meeting included 18 sessions featuring government representatives from the IGF’s member countries as well as experts from industry, civil society, and non-governmental and international organizations.

Valuing Mining Licences for Capital Gains Tax Purposes in Papua New Guinea

November 25–29

This workshop focused on methodologies for the valuation of mining assets to improve the administration of capital gains tax in Papua New Guinea.

Global Mining Tax Initiative Deep-Dive Mission to Ecuador

December 9–13

During this week-long engagement, the IGF provided training sessions for officials in Ecuador on metals streaming, royalty arrangements, and tax incentives.

Off-Take Agreements, Smelter Agreements, and Tolling Arrangements

December 20

This webinar for officials in Ecuador was designed to build understanding about various commercial mining agreements and approaches for effective tax administration.



INTERGOVERNMENTAL FORUM
on Mining, Minerals, Metals and
Sustainable Development

Secretariat hosted by



Secretariat funded by

Canada



Kingdom of the Netherlands

IISD HEAD OFFICE

111 Lombard Ave., Suite 325
Winnipeg, Manitoba
Canada R3B 0T4

✕ @IISD_news

iisd.org

IGF/IISD OTTAWA OFFICE

123 Slater Street, Suite 1001
Ottawa, Ontario
Canada K1P 5G4

secretariat@IGFmining.org

✕   @IGFMining

IGFmining.com